

Combined Science
PAPER 1
Foundation Tier

Tuesday 16 May 2023 – Morning

Diagram Booklet

In the boxes below, write your name, centre number and candidate number.

Surname					
Other names					
Centre Number					
Candidate Number					

INSTRUCTIONS

There may be spare copies of some diagrams in case you need them.

THIS DIAGRAM BOOKLET MUST BE RETURNED WITH THE QUESTION PAPER AT THE END OF THE EXAMINATION.

Contents

Page

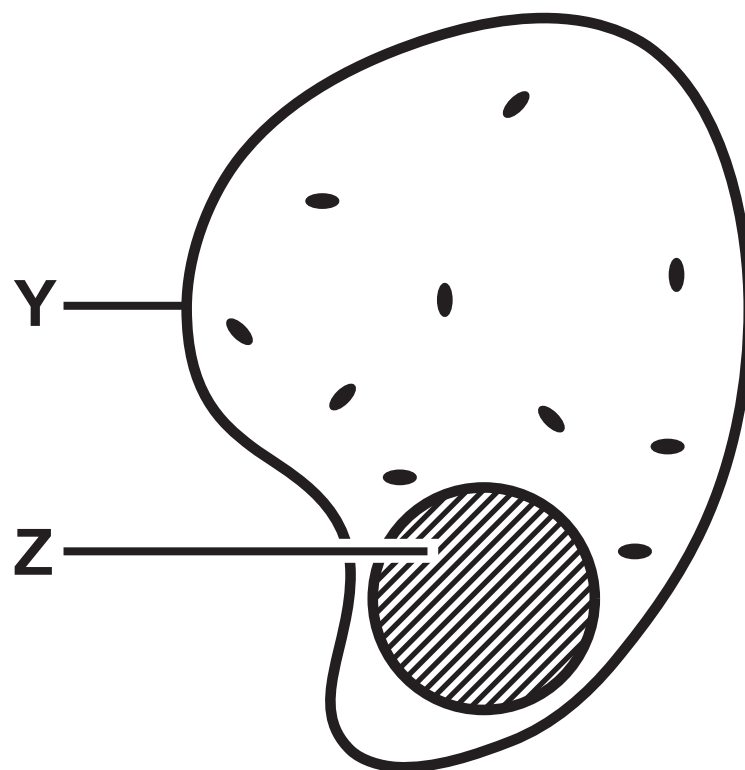
4	Question 1(a)
5	Question 1(b)(i)
6	Question 1(b)(ii)
7	Question 2(a)(i)
8	Question 2(a)(ii)
9	Question 3(b)
10	Question 3(c)
11	Question 4(b)
12	Question 5(c)
13	Question 6(a)
14	Question 6(c)

Spare copies

15	Question 1(b)(ii)
16	Question 3(c)
17	Question 4(b)

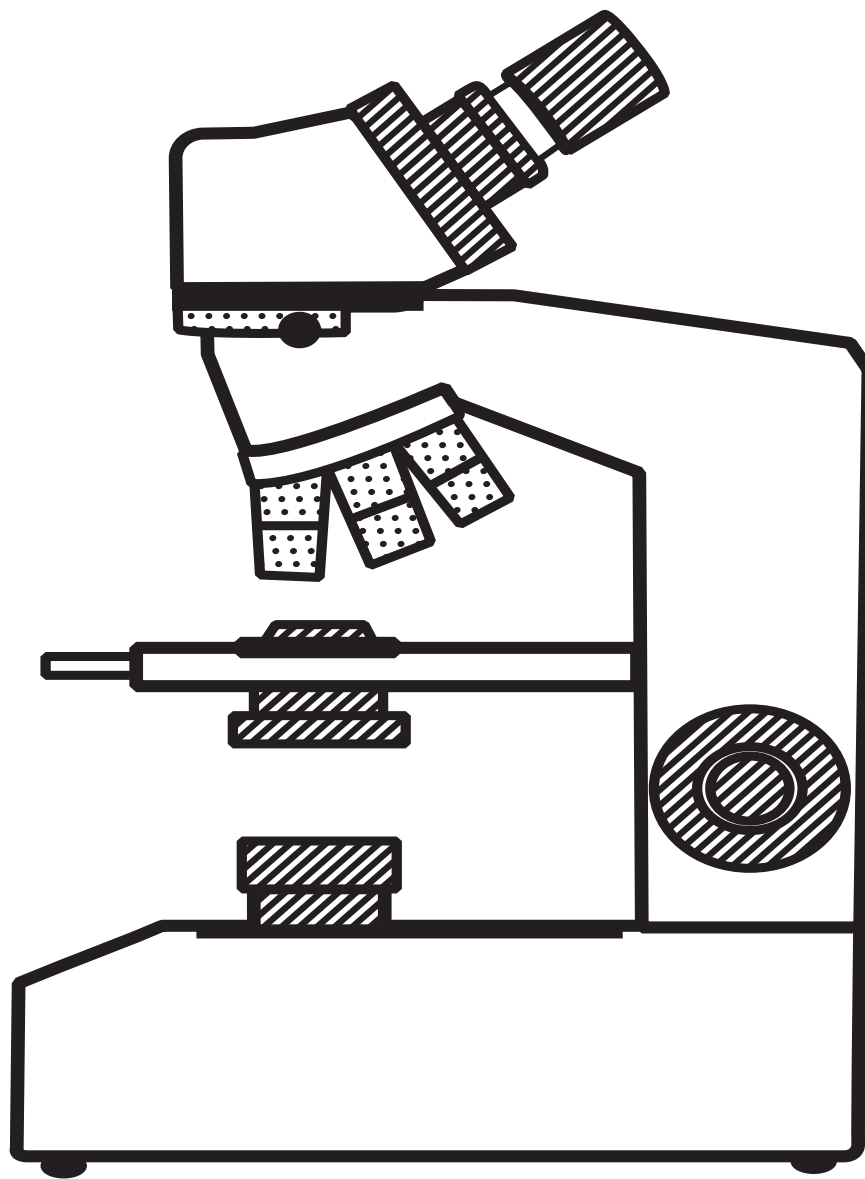
Question 1(a)

FIGURE 1



Question 1(b)(i)

FIGURE 2



Question 1(b)(ii)

**part of the
microscope**

eyepiece

stage

function

● to place a slide on

● to carry
the microscope

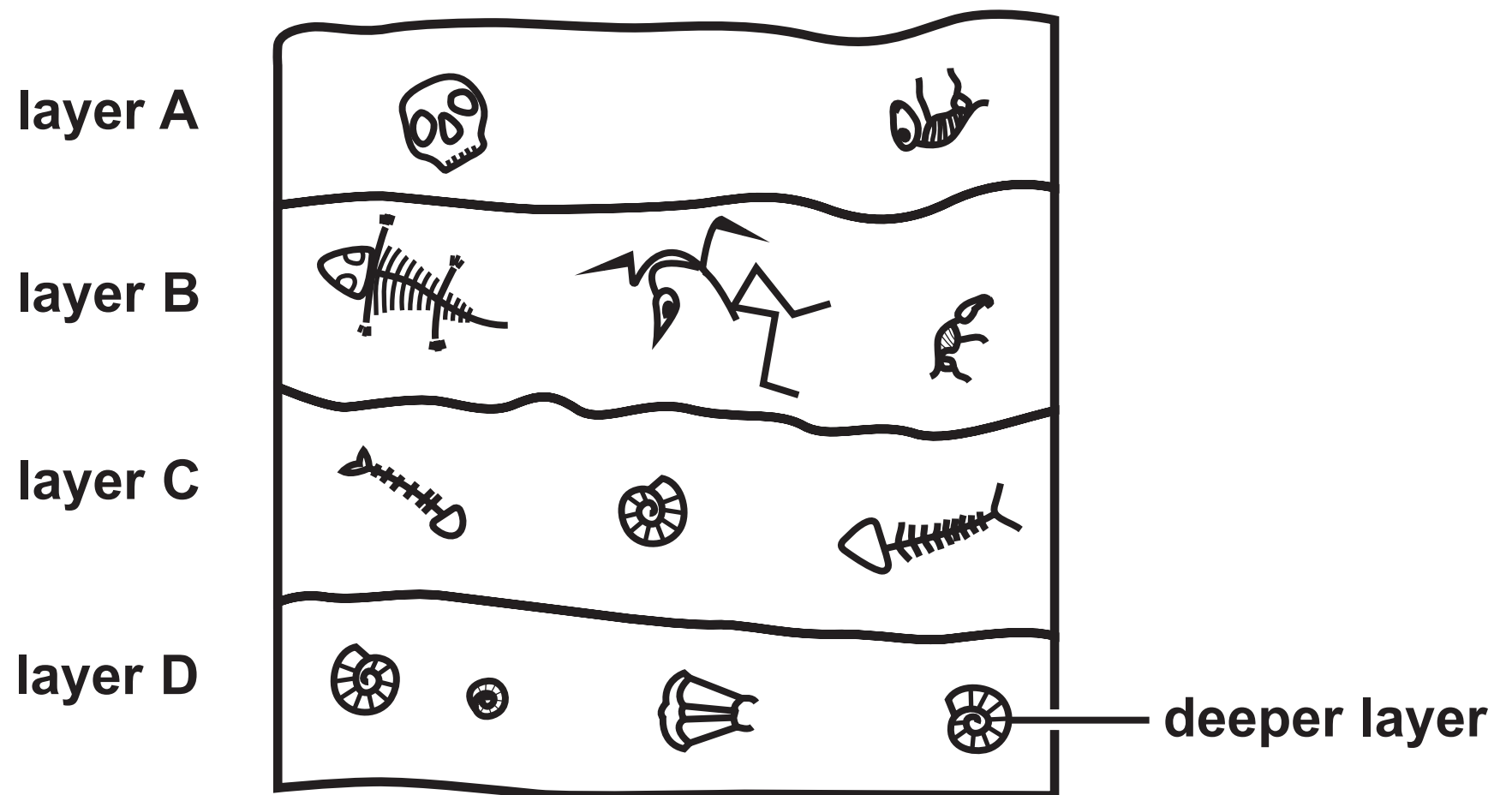
● to make the cells
look brighter

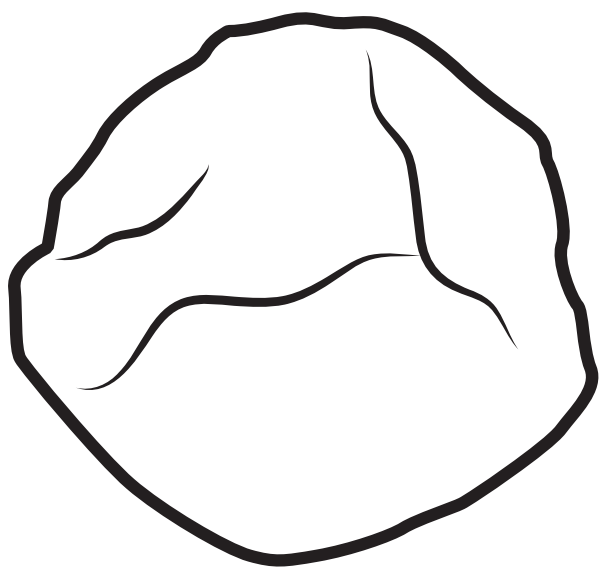
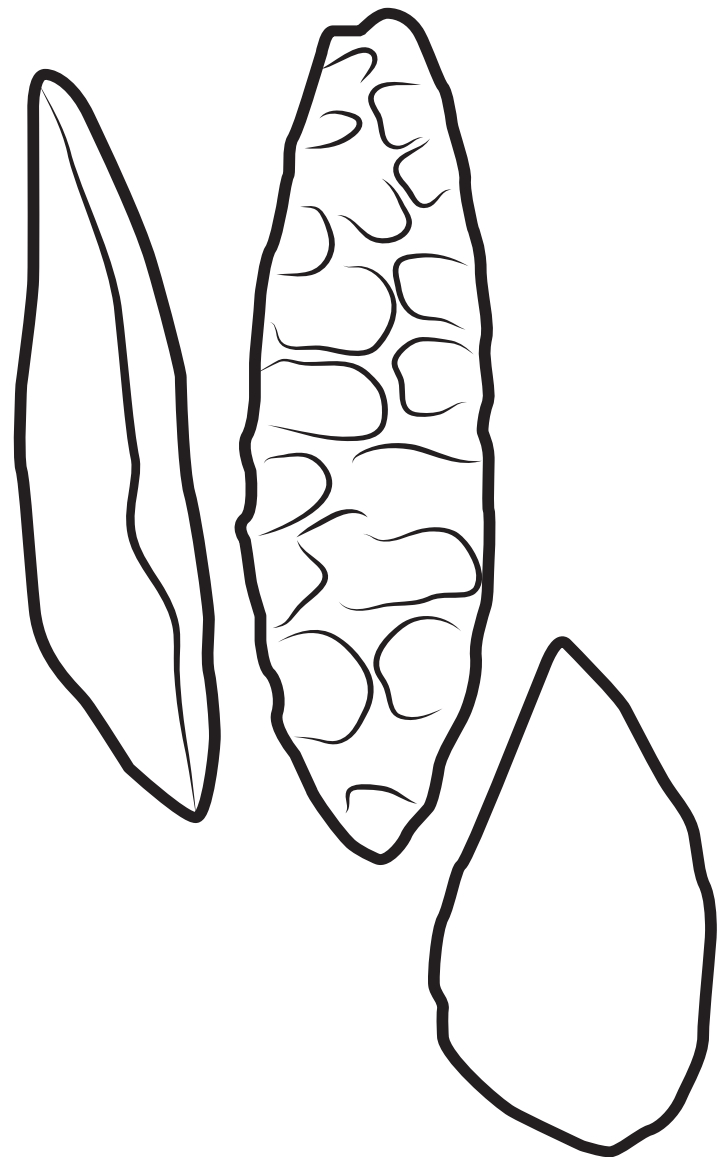
● to look through to
see the cells

● to reflect light onto
the cells

Question 2(a)(i)

FIGURE 4



Question 2(a)(ii)**FIGURE 5****tool A****tools B, C and D**

Question 3(b)

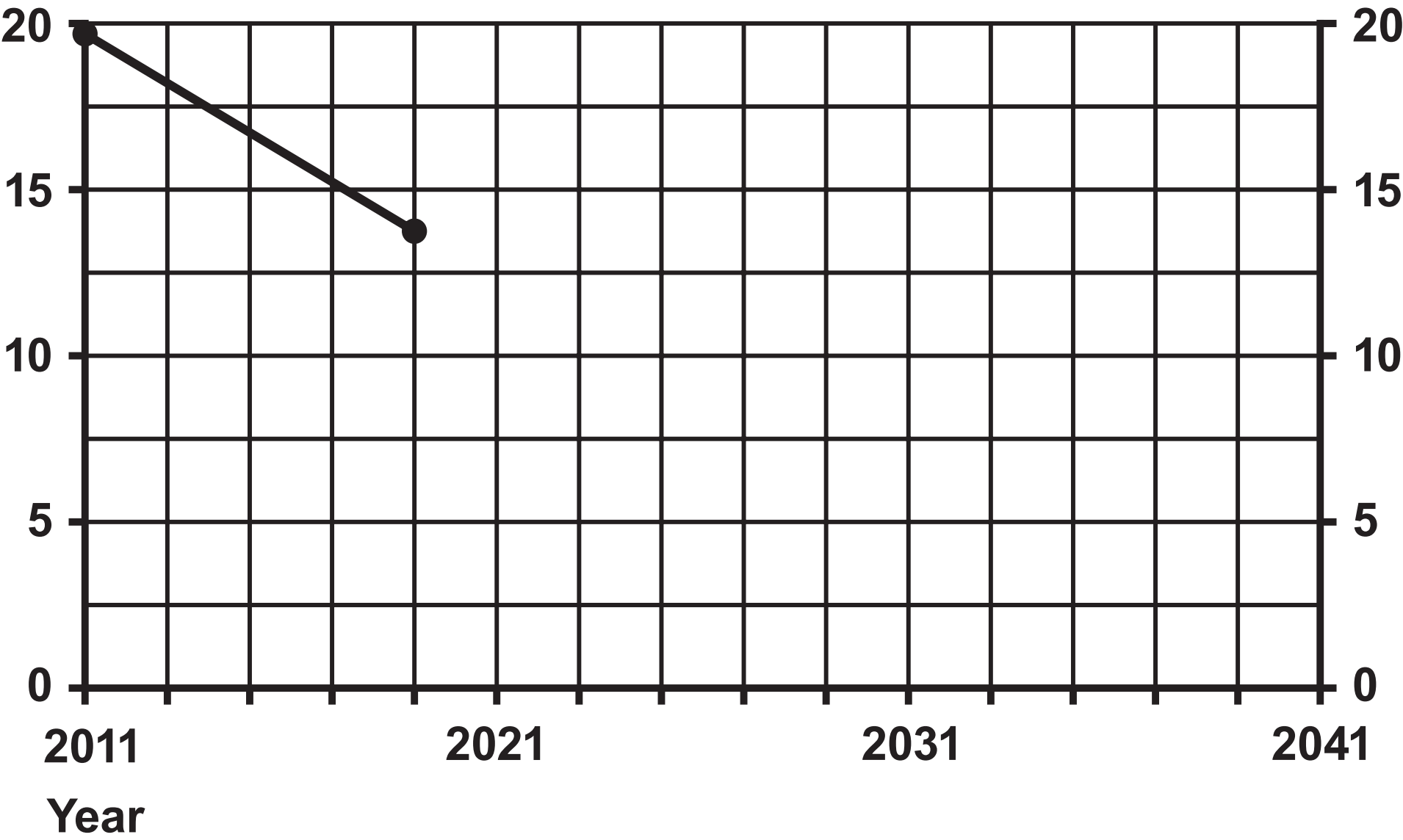
FIGURE 6

BMI range	weight description
18·5 to 24·9	healthy weight
25·0 to 29·9	overweight
30·0 to 39·9	obese
40 or more	severely obese

Question 3(c)

FIGURE 7

Percentage of people
who smoke cigarettes

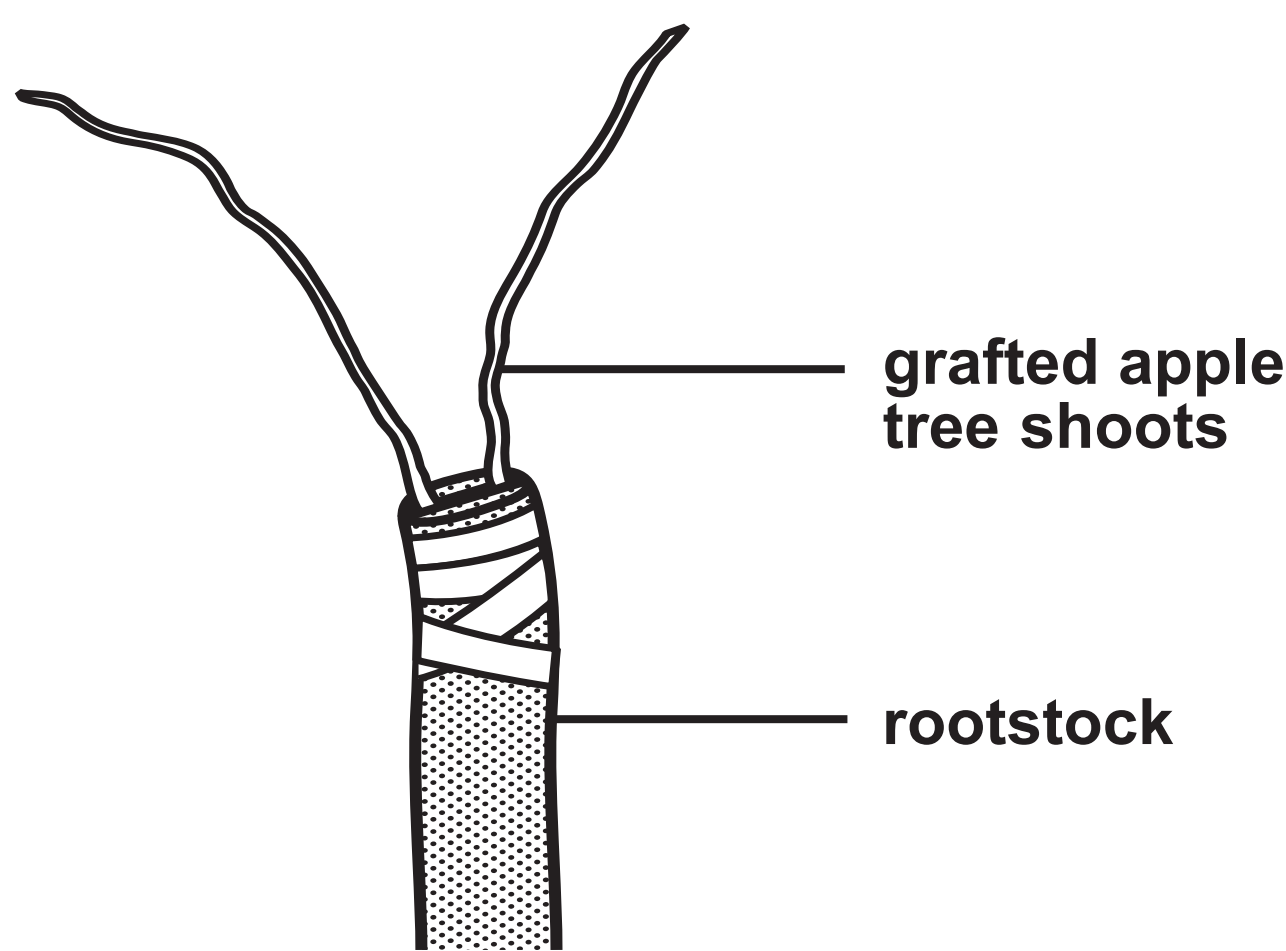


Question 4(b)

		wrinkled seeds	
round	R		
seeds	r		

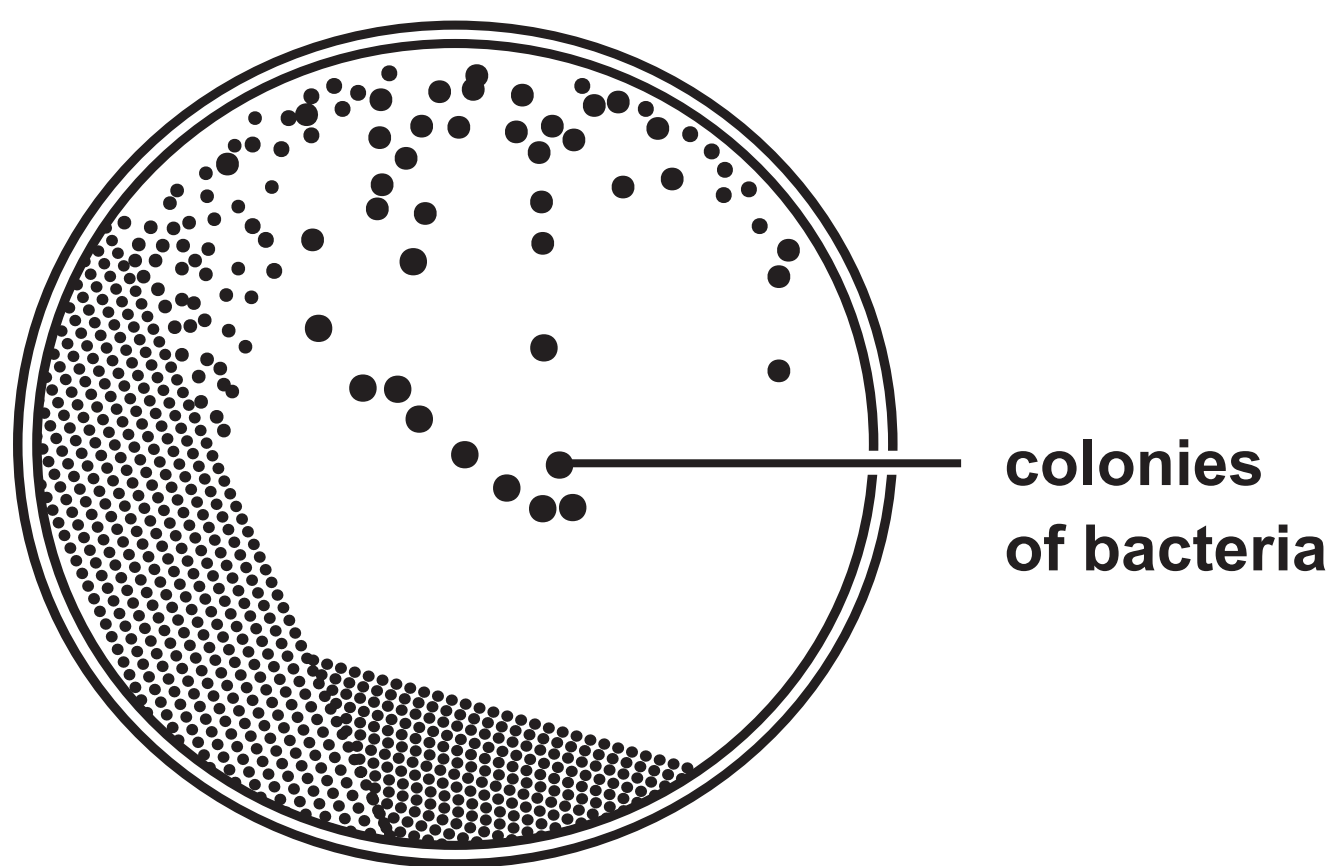
Question 5(c)

FIGURE 9



Question 6(a)

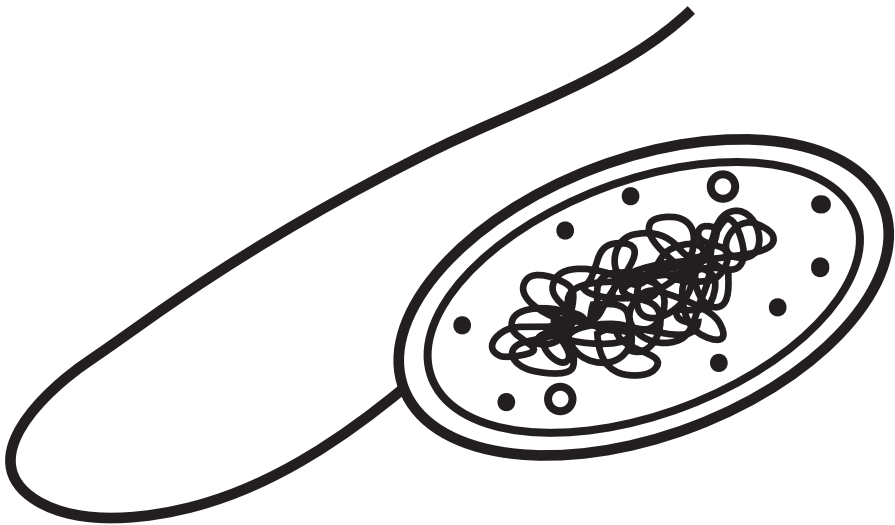
FIGURE 10



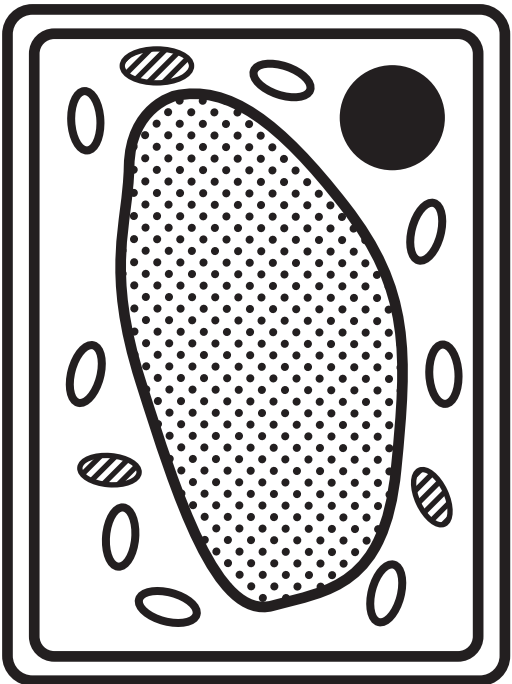
Question 6(c)

FIGURE 11

bacterial cell



plant cell



Question 1(b)(ii)

part of the
microscope

eyepiece

stage

function

● to place a slide on

● to carry
the microscope

● to make the cells
look brighter

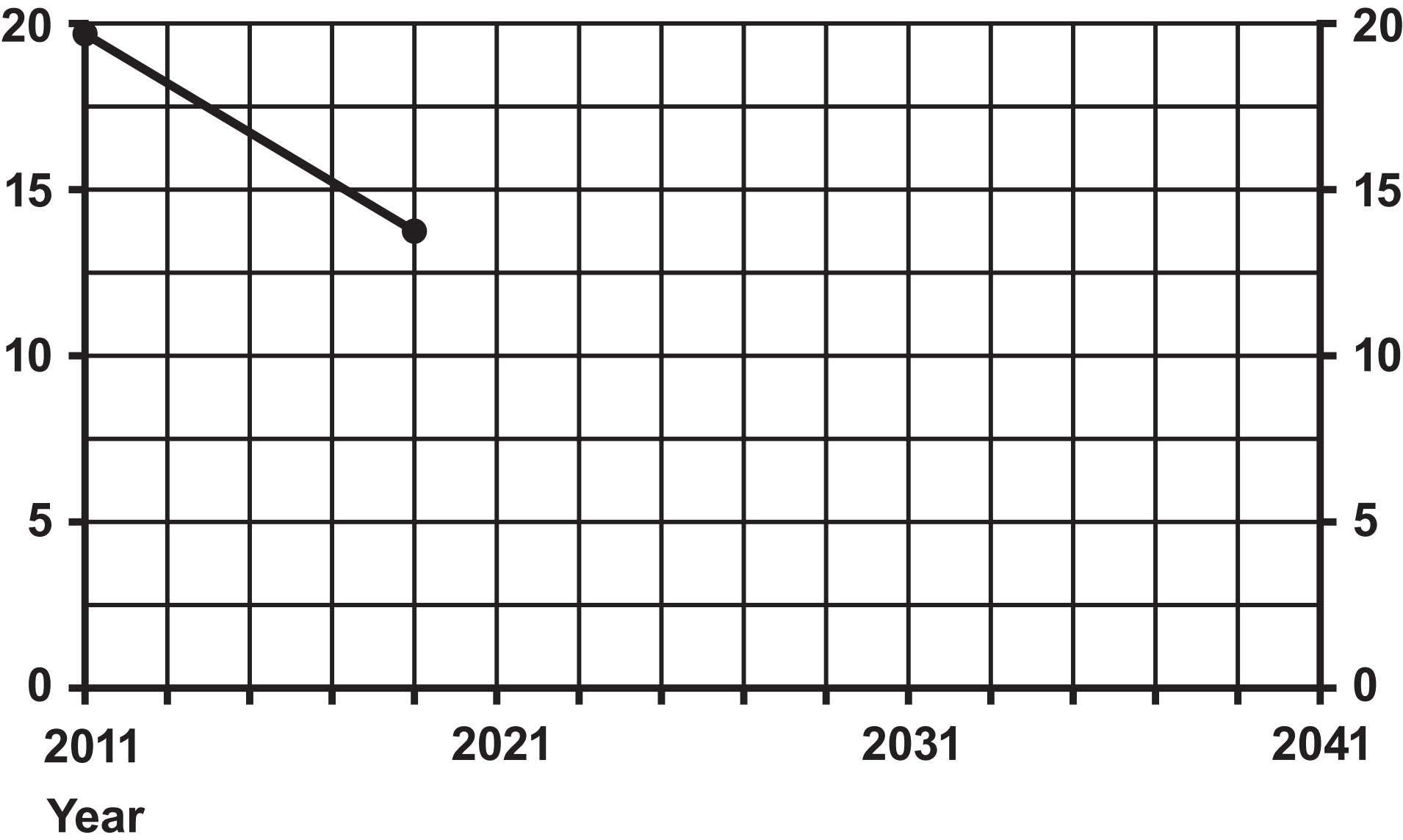
● to look through to
see the cells

● to reflect light onto
the cells

Question 3(c)

FIGURE 7

Percentage of people
who smoke cigarettes



Question 4(b)

		wrinkled seeds	
round	R		
seeds	r		

Question 1(b)(i)

Adapted from: © RouDhi/Shutterstock

Question 2(a)(i)

Adapted from: © Yes058 Montree Nanta/Shutterstock

Question 5(c)

Adapted from: © ATTILA Barsan/Shutterstock

Question 6(a)

Adapted from: © Chatchouliya/Shutterstock)